



# SOCIETY OF AMERICAN MILITARY ENGINEERS SACRAMENTO POST NEWSLETTER

www.samesacramento.org

Volume 5 Issue 2

Summer 2015

## Upcoming Events:

### 24 September 2015

General Meeting  
Topic: Presentation by  
Engineers Without Borders  
President

### 22 October 2015

General Meeting  
Topic: Final onsite tour  
of Folsom Dam Spillway  
Project

### 15 December 2015

Holiday Mixer

See [samesacramento.org](http://samesacramento.org) for details and more upcoming events.

To be notified by email of upcoming SAME events and announcements, please send a request to [info@samesacramento.org](mailto:info@samesacramento.org)

## In this Issue:

Scholarship Awards	1
JETC Report	2
Small Business Workshop	3
Regional San Highlights	4
Cal OES	5
Readiness	5
Call for Volunteers	6
Sustaining Members	7

### Editor:

Sarah McIlroy, Stantec  
SAME Sacramento Post  
Director

### Contributing Editor:

COL Michael L Herman  
SAME Sacramento Post  
President

### Publisher:

Becki Brunelli  
AMEC E&I, Inc.

## SAME Sacramento Post Awards Record Level Scholarships

*By Guy Graening, Brown and Caldwell, Director*

On May 28, 2015 at a special evening dinner ceremony, the Sacramento Post of the Society of American Military Engineers (SAME) awarded 33 scholarships totaling \$35,000 to local high school, community college, and college students from the area or attending schools in the Sacramento region. SAME scholarships are awarded annually to students who are studying engineering or related technical disciplines.

The 22 high school awardees and the schools they are graduating from are: Damian Becker (Oak Ridge); Andrew Chapman (Bella Vista); Ryan Cohen (Mira Loma); Summer Ghaith (Pleasant Grove); Robinson Hess (Del Oro); Ajuney Hora (Sacramento Waldorf); Undral Khuyag (Del Oro); Nathaniel Kreiser (Vista Del Lago); Scotty Kuphaldt (Bella Vista); Nam Le (Jesuit); Tasha Lewis (Placer); Sophia Lu (Davis); Leora Mazumdar (Oak Ridge); Cameron Miller (Colfax); Dane Neves (El Dorado); Logan Page (Bella Vista); Gina Phillipsen (Ponderosa); Jonathan Revolinsky (El Dorado); Sarah Spivak (El Camino); Almit Talreja (Folsom); Ricardo Tan (Davis); and Lyndi Wanlass (Vanden).

This year's 11 college awardees and the schools they are attending are: Roger Blum (UCLA); Max Fefer (Berkeley); Craig Goble (UOP); Abrianna Keller (Biola); Travis Klover (Univ. of Alaska); Kinsey-Prestia Young (UNR); Emily

Sutter (California Baptist Univ.); Ellen Tiedemann (UOP); Ashlyn Wanlass (Utah State Univ.); Michael Weston (UCSB); and Moosa Zaidi (Stanford).

This outstanding group of applicants represented a rich diversity in backgrounds, geography, accomplishments, contributions to their communities, and educational pursuits. SAME scholarships are competitive and are based on the following criteria: academic performance; references; academic/professional goals; extracurricular and volunteer activities; community service activities; previous or active military service or ROTC membership, if any; a statement of why the applicant should be considered for the award; and other comments or justification to assist in the selection process, such as special challenges the applicant has had to overcome or school or community awards.

The Sacramento Post Scholarship program has grown tremendously in recent years. This notable contribution to the development of young engineers and scientists has resulted in widespread recognition for the organization as well as a solid influx of young members. In just the last 8 years alone, the Sacramento Post has awarded \$296,750 in scholarships to 219 deserving area students. Current plans are for a similar robust Post scholarship program in 2016.

*(continued on page 3)*

## Report on the Joint Engineering and Training Conference

*By Margie Namba, Granite Construction, F. SAME*

Margie Namba represented the Sacramento Post at the SAME 2015 Joint Engineering and Training Conference (JETC), held in Houston, Texas from May 18-22. Weather related issues were a big concern for this year's JETC event, as many flights to Houston were cancelled due to heavy rains and thunderstorms. Many attendees were stranded at various airports while trying to reschedule their flights to JETC, and many attendees left the conference early to avoid the heavy rains that were predicted to inundate Houston. Most of the attendees who remained through Friday were able to leave before the heavy rains/flooding virtually shut down Houston during the next day..

This year's JETC focused on energy and the national security impacts of emerging global energy trends. There were breakout sessions on strategies to reduce energy consumption, financing energy projects, climate change, security, and infrastructure resilience. There were more than 30 hours of education and training sessions offered during the conference. The Honorable Tom White, former Secretary of the Army and Founder of DKRW Energy, gave the Keynote Address during the Opening Session and spoke about America's energy crisis.

Outgoing President John Mogge addressed the JETC attendees in the Opening Session and discussed how SAME leadership in the past year was focused on trying to reinvigorate SAME. A leadership team has been developed to: form a value added proposition for SAME members; identify SAME's uniqueness amongst other organizations; discover how to increase member engagement; become recognized as the "Society of Choice"; and maintain SAME members aligned as "One Society". President Mogge discussed how SAME has supported the past year's three focus areas: maintaining relevance, STEM outreach, and support to veterans.

SAME has a new governance model, which was changed in 2012, and which requires a three-year

commitment as President-Elect, President and then Past President. With the governance change, SAME Presidents all are now developed internally rather than being one of the engineering service chiefs on a rotating basis. Jane Penny was instated as the first female president in SAME's 95-years history. Currently, an executive with AECOM, she earlier in her career served as a civilian engineer with the U.S. Air Force and has held a number of leadership positions within SAME, including at the Post, regional and national levels. She became a member in 1983 and is a member of the Academy of Fellows.

The Post Awards Breakfast & Annual Business Meeting included celebration of the accomplishments of SAME's Posts in support of the organization's mission and its three focus areas: support to veterans, STEM outreach, and maintaining relevance (including through vibrant and educational programs). SAME Executive Director, Brigadier General Joe Schroedel, USA (Ret.), highlighted the sound health of SAME's financial position, its growth in total membership and public sector membership (though a slight decline in Sustaining Members), and the development of potential new revenue streams. Moreover, Gen. Schroedel outlined SAME's directional focus to further engage agencies and organizations beyond the Department of Defense, to include local, state governments and other federal agencies. SAME's new mission statement encompasses "support of national security," not just national defense.

A highlight to this year's JETC was the Young Member/NCO/Fellows Mentoring Program and Reception. This was a "speed dating" type of event where Young Members/NCOs were given a few minutes to spend with a Fellow, and when the designated time elapsed, they would rotate to another Fellow. Capt. Bill Bersson, USN (Ret.), Chair of the Academy of Fellows, and Heather Wishart-Smith, Chair of the Young Members Committee, coordinated the very successful event.

## SAME Sacramento Post Annual Small Business Forum

By COL(ret) Mike Conrad, PE, Sapper West Inc., F.SAME

The SAME Sacramento Post held its annual Small Business Workshop on March 27th at the Alumni Center on the campus of Sacramento State University. The Small Business Workshop was a two hour event that included discussions about small business procedures and future federal business opportunities. Over 75 members of the local engineering, construction, and environmental industries attended the event.

The following speakers were featured at this event:

### **Small Business Administration: Kristan Ingebretsen**

The SBA briefed the attendees on the different support areas provided to small businesses. These areas included Capital, Contracting, Counseling, and Disaster relief or referred to as the "3 Cs and a D".

### **Bureau of Reclamation: Renee DeSmet**

Renee DeSmet, Small Business Specialist with the Mid-Pacific Region, Bureau of Reclamation, briefed the audience on the Mid-Pacific Region's organization and structure, small business procurement program for FY14 purchases and those forecast for FY15.

### **USACE Sacramento District: Michelle Stratton**

Michelle Stratton, Deputy, Small Business Programs

at USACE Sacramento District, briefed the group on the Sacramento District's organization and structure, current Civil Works and Military program IDIQ holders, and future civil works and military program opportunities.

### **California National Guard: Colonel (CA) Mike Herman**

Procurement needs and practices of the State Military Department were described for the attendees, which included a high percentage of work to small businesses.

### **California Department of Water Resources (DWR): Rich Zmuda**

Rich Zmuda described the State's Disabled Veteran Business Enterprise (DVBE) program and his agency's process of achieving their small business and DVBE goals.

During this Workshop, Colonel Mike Herman presented donation checks to representatives from the St. John's Program and the Travis Air Force Base Fisher House. These donations were the result of the proceeds from the Sacramento's SAME 2014 Holiday Party.

The presentations were well received and attendees also received PDHs based on the technical training benefits of the lunch-time meeting.

## SAME Sacramento Scholarships (cont.)

(continued from page 1)

The 2015 Post Scholarship Committee consisted of the following volunteers: Col Michael Herman (CA

State Military Reserve); Sarah McIlroy (Stantec); Guy Graening and Carina Johnston (Brown and Caldwell); Wendy Linck (Antea Group); and Carl Lang (USACE ret.).



Join the 'SAME Southwest Region Group' on LinkedIn to get the latest updates on SAME as well as connect with other SAME members in your area. The Southwest Region includes eight Posts and associated Field and Student Chapters throughout California and Nevada.



## Regional San Tour in Elk Grove

*By Nathan Rockwood, Mead and Hunt, Director*

SAME Membership gathered on Thursday, June 25 at Regional San's facility in Elk Grove for an overview of their operations as well as a preview of the Echo Water Project. Michael Donahue has worked for Regional San for many years and provided an excellent history of the waste water treatment process at their facility, describing their background and growth over the years. His well-rounded presentation covered interesting details highlighting past, present and future insights of the evolution of the treatment plant.

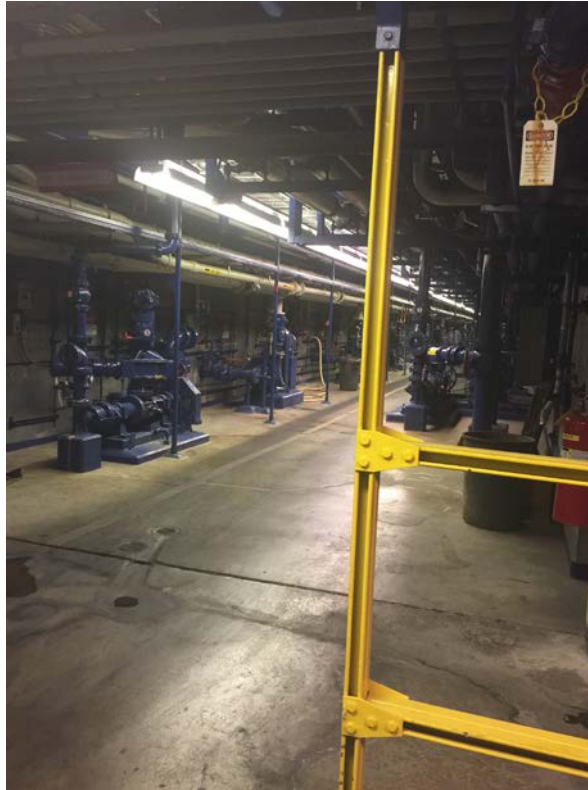
Afterwards, William Yu provided a description of the plans to expand at Regional San. The expansion is referred to as the Echo Water Project. Yu shared a building information model (BIM) of the design that is just now beginning to be constructed. The model not only highlighted

the design itself, but also demonstrated the schedule as well as dollars projected to be spent on the project. At its peak, the construction project will employ 600 workers, entering and exiting Regional San each day to complete the project.

After lunch and presentations, Michael Donahue led the group on the field tour from the bowels of the system (mazes of piping and pumps underground) to the staffed control room that oversees the whole system to the roof top that provided a view that overlooked the entire site.

Some observations during the tour were: The cleanliness and organization of the facility. The enormous size of the facility. The friendliness and helpfulness of the staff at Regional San.

It is definitely a tour that SAME will want to revisit as construction for the Echo Water Project and further expansion moves forward in the coming years.



*Piping photo provided by Maria Barajas*



*Group photo provided by Coreen Cecil*

## Sacramento Post Supports Cal OES Disaster Recovery Program

*By Cheryl Bly Chester, Rosewood Environmental Engineering, F. SAME*

California is prone to earthquakes and other disasters that force people to abandon their homes and businesses seeking safety. After a disaster, entire communities may be shut down awaiting safety inspections to clear buildings for re-entry or reoccupation. Local building inspectors often struggle to evaluate building safety after large events when hundreds or thousands of damaged structures require evaluation, so local leaders may request help from the State of California Office of Emergency Services (OES) Safety Assessor Program.

For 10 years, the Sacramento Post of the Society of American Military Engineers has participated in the training of volunteers to come to the aid of local building inspectors after a disaster to help clear buildings for safety and red tag those deemed temporarily unsafe until detailed analysis and repairs are completed.

On June 19, 2015, Dr. Cheryl Bly-Chester, a SAME Fellow and Safety Assessor Evaluator Trainer, joined Jim Barnes, the OES Safety Assessor Program Statewide Coordinator, in teaching an Evaluator training session for building professionals. The Safety Assessor "Evaluator course certifies disaster service workers to conduct building evaluations. The June session at the California OES

Headquarters was well attended with significant participation by members of the Sacramento SAME Post.

Jim Barnes leads a statewide group dedicated to training civil engineers, architects, and building inspectors to do field evaluations of buildings and other infrastructure following an emergency. This training is approved by the federal Department of Homeland Security for homeland security grant funding, and for Continuing Education Units through the California State University system.

For those whose certification is expiring soon, a refresher course is offered online at <https://w3.calema.ca.gov/RespRecover/sapreg.nsf/SAPRegistrationEval3?OpenForm> that is accessible using your SAP ID certification number. If you missed the June course and wish to attend an upcoming class, visit the OES website <http://www.caloes.ca.gov/cal-oes-divisions/recovery/training> to locate the scheduled training nearest you.

With California's history and potential for natural disasters, preparedness is an important aspect of any safety plan. SAME is proud to support disaster awareness, prevention, and recovery efforts locally and across the country.

---

## Outreach for Questionnaire

*By Sean McNeil, Mead and Hunt*

The Sacramento SAME Post will be participating in the Great California Shake-Out on October 15th by updating the Post's Readiness Plan/Post's Sustaining Member Capabilities Database and by running an email exercise. The goal of the email exercise is to capture the Posts Sustaining Member readiness capabilities in a functional format. If you would like to be a Sustaining Member listed in the Posts Readiness Plan and you would like to receive future Readiness emails in the event of a real world event please have one point of contact from your organization respond to the email that will be sent on October 15th which will contain the capabilities

questionnaire (2 sheets to fill out) and email it to [sean.mcneil@meadhunt](mailto:sean.mcneil@meadhunt).

The information obtained will be used to update the Sustaining Members Capabilities list which SAME sends out to all federal, state, and local emergency. The Sacramento Post Readiness Committee is seeking out sustaining members to participate in the committee and help with annual Post Readiness events. If you are interested please email Sean McNeil ([Sean.McNeil@meadhunt.com](mailto:Sean.McNeil@meadhunt.com)) or Cpt David McDonald ([David.P.Mcdonald@usace.army.mil](mailto:David.P.Mcdonald@usace.army.mil)).

## Call for Volunteers– Great American River Cleanup!

By Sarah McIlroy, Stantec, Director

Are you interested in helping to clean up the American River while spending time getting to know other SAME members? If so, please join us on Saturday morning, September 19, 2015 for the Great American River Clean Up. The American River Parkway Foundation\* is organizing this annual event to clean up the American River from Discovery Bay to Negro Bar. In 2014, they had over 1,500 volunteers and removed 21,000 pounds of trash!

If you'd like to participate this year, please contact Sarah McIlroy at [sarah.mcilroy@stantec.com](mailto:sarah.mcilroy@stantec.com) or 916-773-8100 for more information and so we can plan supplies accordingly. Thank you!

*\*The mission of the American River Parkway Foundation to support the preservation and enjoyment of the American River Parkway by fostering environmental education, stewardship and volunteer opportunities.*

*As a part of this mission we conduct the annual Great American River Clean Up. Participation in the Great American River Clean Up is a real contribution to the health of the Parkway and river. Removing trash and debris prevents pollutants from entering the watershed, harming the wildlife, or creating hazards for recreational users. Additionally, keeping the Parkway clean protects ocean life by preventing trash from being washed downstream during the winter rains. We need your support for this very worthy event.*

## Calling all SAME Members...and Potential Ones!

By Maria Barajas, BSK Associates Engineers and Laboratories

We have met many of you at our events and appreciate your contributions and attendance. The Sacramento Post would like to encourage all our current members to attend our meetings and invite you to bring a friend as well. Friends can see what our events are like and find out for themselves how participating in SAME can fulfill their hearts and benefit themselves and their companies. Our easy sign up program can make it effortless to sign up that day. Our SAME board members will be available to introduce you and our new potential members to others at our events.

Our membership focus for the year is to recruit more members who will be able to benefit from our networking events, current industry news, and volunteer opportunities. While our organization focuses on engineering opportunities in our industry, we welcome all environmental industry professionals, professors, and students.

Here are just a few of the benefits you will receive from joining SAME:

1. Connect with top engineering officials from the public and private sector at SAME national, regional and local conferences and events.
2. Learn about upcoming projects directly from the Engineering Service Chiefs.
3. Build important relationships with SAME's

community of more than 25,000 A/E/C professionals.

4. Strengthen relationships through our network of more than 110 Posts (chapters) worldwide.
5. Get valuable education through SAME's diverse Continuing Education Program.
6. Be the first to learn about important A/E/C changes, contracts and awards through The Military Engineer magazine. Enjoy feature articles and news items of immediate importance to our community. - See more at: <http://www.same.org/index.php/membership/join-same#sthash.rG0wpNjO.dpuf>

The Sacramento baseline for 2015 is 121 public members. The current database total is:

Public sector members 106

Individual Members: 210

Company and Agency Representatives: 403

Total Membership: 613

At the end of 2014 the total membership stood at 661, which is our baseline to measure growth or decrease for 2015. Our goal is to increase the membership by at least 1 on a yearly basis, therefore, we would like to get at least 49 more members to join SAME by the end of the year.

(continued on page 7)



## Calling All Members! (cont.)

*(continued from page 6)*

Please, for those of you reading this, if you are a sustaining member firm, have your company add (an) additional representative(s) to the Sacramento Post. There is no cost if your firm currently list less than six representatives to Sacramento Post. You are (within guidelines) allowed six representatives and many of our sustaining member firms do not list six representatives to Sacramento.

Making our membership goals is important in that it opens the door for recognition of the other programs the post pursues each year--education, training, leadership, mentoring, emergency preparedness and more.

If there are any questions about membership, please don't hesitate to contact Sharol Moore at 916-242-4347 or [Sharol.moore@347group.com](mailto:Sharol.moore@347group.com), or Coreen Cecil at 916-519-7466 or [coreen@cscad.com](mailto:coreen@cscad.com).

## Sacramento Post Sustaining Member Firms

The Sacramento Post is made strong by the continuing support of our Sustaining Member Firms and our Supporting Agencies. These great organizations are listed below (based on the National Database on October 12, 2014). If there are any questions about membership, please don't hesitate to contact Sharol Moore at 916-244-7685 or [sharol.moore@347group.com](mailto:sharol.moore@347group.com).

347 Group, Inc.	CH2M
AECOM	City Light & Power, Inc.
AHTNA Engineering Services, LLC	EA Engineering, Science, and Technology, Inc.,
Ahtna Government Services Corp.	PBC
Amec Foster Wheeler	ECORP Consulting, Inc.
Anvil Builders, Inc.	Engineering/Remediation Resources Group (ERRG)
ARCADIS, U.S., Inc	Environmental Quality Management Inc.
Atkins	ERM
Bay West LLC	Forsgren Associates, Inc.
BC Laboratories, Inc.	Gannett Fleming Inc.
Black & Veatch Special Projects Corp.	GENTERRA Consultants, Inc.
Blackburn Consulting	Geocon, Inc.
Blaine Tech Services, Inc.	GHD Inc.
Brown and Caldwell	Gilbane Federal
Burleson Consulting Inc.	Granite Construction Company
Burns & McDonnell	Hammel, Green, and Abrahamson, Inc.
CA Department of Water Resources	Hatch Mott MacDonald
Cabrera Services Inc.	HDR
Cardno, Inc.	HELIX Environmental Planning
CB&I Federal Services, LLC	HydroGeoLogic Inc.
CDM Smith	Innovex Environmental Management, Inc.
Cerrudo Services	Jacobs

*(continued on page 8)*

## Sacramento Post Sustaining Member Firms (cont)

(continued from page 7)

Kiewit	Stanley Consultants Inc.
Kleinfelder	Stantec, Inc.
Leidos	Suulutaaq, Inc.
Magnus Pacific Corporation	Swinerton Builders Government
Marsh Creek LLC	Synectics
Martin Brothers Construction	Taber Consultants
Mason & Hanger	Tepa, LLC
Mead & Hunt, Inc.	Terracon Consultants, Inc.
MGE Engineering, Inc.	Terraphase Engineering, Inc.
Michael Baker International, LLC	Tetra Tech, Inc.
MWH	The Dutra Group
NCE	The Stahl Companies, Inc.
Ninyo & Moore	Towill, Inc.
Nordic Industries, Inc.	Trihydro Corporation
Northgate Environmental Management, Inc.	Tri-Technic Inc.
Pacific States Environmental Contractors, Inc.	URS Corporation
PIKA International	USACE - Sacramento District
Psomas	WEST Consultants, Inc.
Quincy Engineering, Inc.	West Pacific Electric Company
Robert Heinen Consulting Engineers	Westervelt Ecological Services
RORE, Inc.	Wildlands
SAGE Engineers Inc.	Wood Rodgers, Inc.
Shannon & Wilson Inc.	Woodward Drilling Company, Inc.
Site Work Solutions, Inc.	Woolpert, Inc.
Spectrum Services Group, Inc.	WSP/Parsons Brinckerhoff

---

**The Sacramento Post appreciates the support from all our  
Individual Members and Sustaining Member Firms!**

---

Those individuals or firms interested in becoming SAME members can contact Sacramento Post Membership Chair, Sharol Moore at [sharol.moore@347group.com](mailto:sharol.moore@347group.com). For information on types of available SAME memberships, please visit: <http://www.same.org/>

---



**SOCIETY OF AMERICAN MILITARY ENGINEERS**